

Shihlin Electric Power Transformers



Built to CAN/CSA-C88-M90 Standards

Shihlin Electric: The Company

The Course of Change and Development - In 1955, Shihlin Electric Joint Stock Company in Taiwan made its first step to manufacture heavy-duty electrical equipment in collaboration with *Mitsubishi Electric Corporation*, and subsequently developed 69kV, 115-161kV & 230-345kV power transformers. In 2003, Shihlin successfully developed 161kV 60MVA SF6 Gas Insulated transformers for an underground transformer station in the Taipei World Trade Center. The 50-year-long relentless improvement, reliable expertise and superb quality have enabled Shihlin Electric to deliver customized products and services.



Main Power Transformer Products

- 69kV - 345kV oil Immersed Power Transformers up to 750 MVA
- *500kV Power Transformers coming soon
- Furnace Transformers
- Rectification Transformers
- Shunt Reactors, oil immersed to 100 MVAR

Quality Assurance

Comprehensive in-house high-precision test equipment with ISO quality certification.

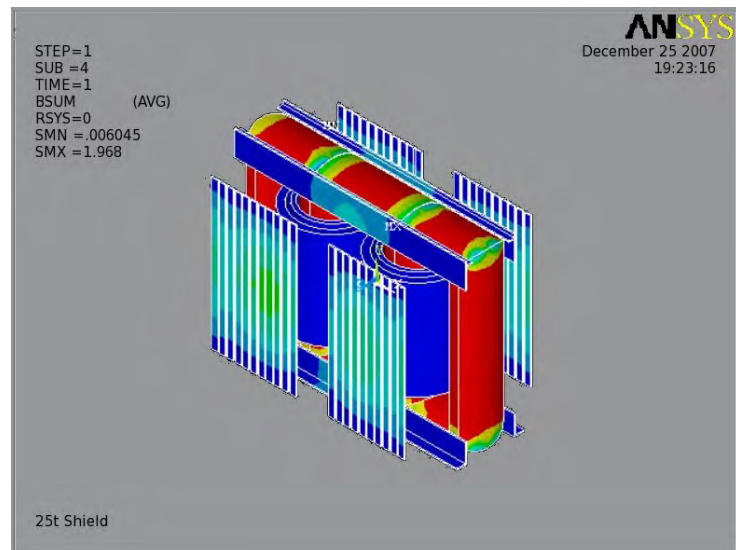


With the transfer of up-to-date Mitsubishi Electric Corporation know-how and technical support of Shihlin Electric's R&D team, customers receive reliable world class products of the highest quality.

- Shihlin's high-performance test center provides stringent quality inspection from material receiving to final product verification tests and acceptance testing.
- Their 240 kJ, 2400kV high-performance impulse voltage testing equipment offers stringent insulation endurance verification test.



Modern Impulse test equipment



Finite Element Analysis

Visit Us On Line At: www.tanddproducts.com E-MAIL Us At: quotes@tanddproducts.com

Calgary Office
Phone (403) 251-2868

Edmonton Office
Phone (780) 419-7145

Saskatoon Office
Phone (306) 373-5441

Manufacturing Technology - The Shihlin Advantage

Strict Control of Working Environment with Advanced Automatic Equipment

- Manufacturing operations such as material receiving, insulation material production, core cutting, core stacking, core assembly, and drying are all in precisely controlled dust-free clean room environment to reduce foreign particle contamination.
- State-of-the-art winding hall with temperature and humidity controlled dust-free clean room environment. The ultimate prevention of moisture and particle contamination.
- Fully automated core cutting machine and core stacking machine work together providing excellent core quality by reducing core steel handling and subsequent loss degradation.
- State-of-the-art Swiss-made Vapor-Phase Drying with computer-controlled automatic monitoring feature provides uniform core heating which ensures the core insulation quality.



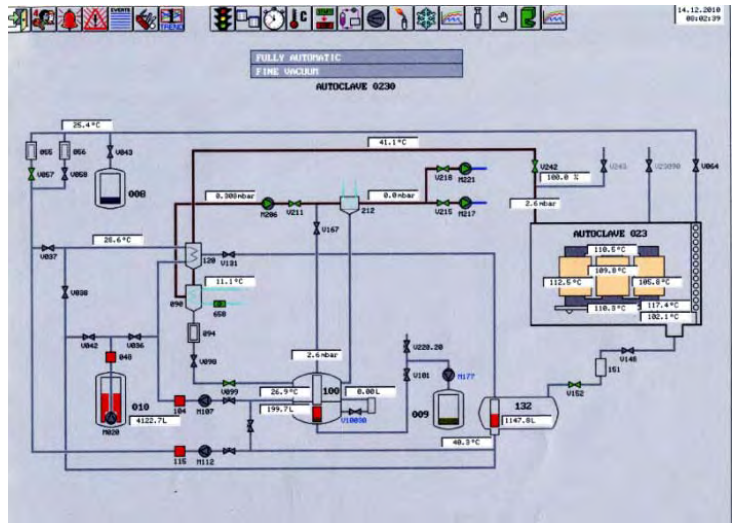
Fully automated core cutting machine



Fully automated core stacking machine



Winding Hall - Temperature and humidity controlled, dust-free clean room environment



State-of-the-art vapor-phase drying

Over 50 Years Experience

Shihlin Electric Transformers are in service worldwide

